



RIVET-RAK
STEEL SHELVING

SOLUTIONS FOR STORAGE

RIVET-RAK STEEL SHELVING

Tri-Boro delivers both ease of assembly and unobstructed access with **RIVET-RAK**.

It is available in the widest range of sizes in the industry, and unlimited combinations that can satisfy a variety of requirements.

PERFORMANCE FEATURES:

- Wide span capability
- Boltless, clipless construction
- Assembles in minutes
- Rivets lock into keyholes for added stability
- All components are powder coated
- Shelf sizes up to 48" x 96"
- Standard heights to 22' available
- Shelves are adjustable on 1-1/2" centers
- Various sizes and shelf capacities
- Custom configurations available
- Particle board shelves and wire decking available



BEAM LOAD TABLE

(CAPACITY POUNDS PER PAIR)

	LENGTH	NO TIE BEAMS	ONE TIE BEAM
SINGLE RIVET LIGHT BEAMS (RBL)	24"	519	N/A
	30"	414	N/A
	32"	390	N/A
	36"	350	N/A
	42"	297	N/A
	48"	261	N/A
DOUBLE RIVET Z-BEAMS (ZB)	24"	1100	N/A
	32"	1000	N/A
	36"	900	N/A
	42"	800	N/A
	48"	700	700
DOUBLE RIVET Z-HD BEAMS (ZB-HD)	60"	600	600
	69"	550	550
	72"	500	500
DOUBLE RIVET ANGLE BEAMS (RBA)	30"	1150	N/A
	36"	928	N/A
	48"	773	1546
	60"	618	1236
	69"	537	1074
	72"	515	1030
	84"	441	882
	96"	386	772
DOUBLE RIVET CHANNEL BEAMS (RBC)	48"	N/A	2658
	60"	N/A	2128
	69"	N/A	1850
	72"	N/A	1773
	84"	N/A	1519
	96"	N/A	1330



4 Rivet Angle Posts with a full perimeter of Double Rivet Angle beams top & bottom and Single Rivet Angle beams at intermediate levels - with particle board shelving.



4 Heavy Rivet Angle Posts with Double Rivet Angle beams at all levels - with particle board shelving

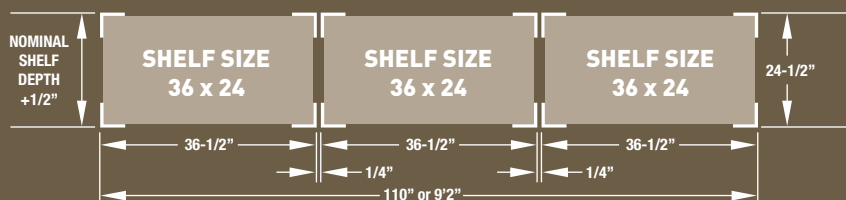
POST LOAD TABLE

(CAPACITY POUNDS EACH)

BEAM SPACING	STD. ANGLE POST	HVY. ANGLE POST
12"	2200	2812
18"	2104	2650
24"	2007	2488
30"	1920	2326
36"	1811	2165

PLANNING CHART

Unit growth must be considered when designing a shelving layout. The actual outside dimensions of units are 1/2" greater than the nominal shelf size. A clearance of 1/4" must be left between units.



RIVET-RAK COMPONENTS

POSTS

RIVET ANGLE POST



13 gauge cold-rolled steel
1-1/2" x 1-1/2" on 1-1/2" centers

MODEL NUMBER	HEIGHT INCHES	WEIGHT LBS.
RP36	36	1.9
RP48	48	2.6
RP60	60	3.2
RP72	72	3.8
RP84	84	4.5
RP96	96	5.1
RP108	108	5.8
RP120	120	6.4

HEAVY RIVET ANGLE POST



13 gauge cold-rolled steel
1-7/8" x 1-7/8" on 1-1/2" centers

MODEL NUMBER	HEIGHT INCHES	WEIGHT LBS.
RPH72	72	4.8
RPH84	84	5.6
RPH96	96	6.4
RPH108	108	7.0
RPH120	120	8.0
RPH144	144	9.6
RPH168	168	11.2
RPH192	192	12.8
RPH216	216	14.4
RPH240	240	16
RPH264	264	17.6

RIVET "T" POST



14 gauge cold-rolled steel
3" x 1-1/2" on 1-1/2" centers
(Used as a common post between rivet units)

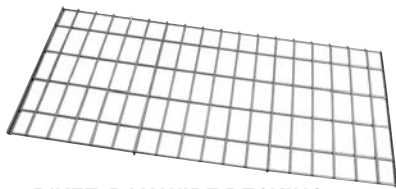
MODEL NUMBER	HEIGHT INCHES	WEIGHT LBS.
RTP72	72	8.0
RTP84	84	9.5
RTP96	96	11.0
RTP108	108	12.0
RTP120	120	12.5
RTP144	144	14.0
RTP168	168	15.5
RTP192	192	17.0
RTP216	216	19.1
RTP240	240	21.2
RTP264	264	23.3

PARTICLE BOARD SITS FLUSH WITH TOP PROFILE OF BEAM ON SINGLE RIVET LIGHT BEAM AND DOUBLE RIVET Z BEAMS.

RIVET-RAK DECKING OPTIONS



PARTICLE BOARD SHELVES
Our particle board decking is 5/8" thick and pre-cut to size for use with Tri-Boro rivet rack. For general purpose and record storage applications. (See price list for all sizes)



RIVET-RAK WIRE DECKING
Color: Gray

Popular Sizes:

MODEL NUMBER	D x W (inches)
WD1836	18 X 36
WD1848	18 X 48
WD2448	24 X 48
WD2472	18 X 72
WD3069	30 X 69
WD3636	36 X 36
WD3648	36 X 48
WD3672	36 X 72
WD4848	48 X 48
WD4872	48 X 72

ORDER SPECIFICATIONS:

RIVET-RAK storage units are made up of posts, side-to-side beams and front-to-back beams. There are certain minimum requirements for beam use to ensure structural stability and safety. For example: all units must have 4 double rivet beams at top and bottom for stability. (2 side-to-side and 2 front-to-back, or full perimeter)

Follow these guidelines when specifying components:

- All units require a full perimeter of double rivet beams at top and bottom of unit.
- Single Rivet Light Beam (RBL) units 24" deep or less:
 - do not require single rivet beams front-to-back at each intermediate level in the unit.
 - 6' - 8' high must have one single rivet beam intermediate level front-to-back, located approximately in the middle of the unit.
 - 9' - 10' high must have two single rivet beam intermediate levels front-to-back, located to divide the height into 3 equal parts.
 - 11' - 16' high must have three intermediate levels; a full perimeter of double rivet beams in the middle plus intermediate levels of front-to-back single rivet beams in the upper and lower halves of unit.
- Single Rivet Light Beam (RBL) units 30" deep or greater:
 - All units must have single rivet beams front-to-back at every intermediate level: units 11' - 16' must have single rivet beams front-to-back at every intermediate level PLUS a full perimeter level of double rivet beams located approximately in the middle of the unit.
- Double Rivet Angle Beams and Double Rivet Channel Beams must have front-to-back beams at each beam level to provide decking support and ensure stability. When using Double Rivet Channel Beams from side-to-side, Double Rivet Angle Beams must be used from front-to-back.
- Rivet Tie Plates are recommended to tie adjacent angle post units together and to ensure structural stability. Tie plates should be used at the top and bottom of adjacent posts with additional tie plates spaced no more than 48" apart. Tie plates are not used on units with T posts.

PERF DECK AND SOLID STEEL DECK FOR RIVET-RAK



RIVET-RAK COMPONENTS

BEAMS

**SINGLE RIVET
LIGHT BEAM**



14 gauge 3/4" x 1-1/4"

MODEL NUMBER	LENGTH INCHES	WEIGHT LBS.
RBL12	12	0.6
RBL15	15	0.7
RBL16	16	1.2
RBL18	18	0.9
RBL24	24	1.3
RBL30	30	1.6
RBL36	36	1.9
RBL42	42	2.2
RBL48	48	2.4

**DOUBLE RIVET
Z BEAM**



**DOUBLE RIVET
Z-HD BEAM**

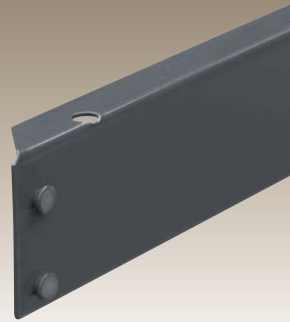
Z-BEAM: 14 gauge 3/4" x 2-5/8"

MODEL NUMBER	LENGTH INCHES	WEIGHT LBS.
ZB12	12	1.0
ZB15	15	1.6
ZB16	16	1.6
ZB18	18	1.6
ZB24	24	2.0
ZB30	30	2.6
ZB32	32	2.8
ZB36	36	3.0
ZB42	42	3.6
ZB48	48	4.0

Z-HD: 14 gauge 1-1/8" x 2-5/8"

ZB54	54	5.0
ZB60	60	5.0
ZB69	69	5.9
ZB72	72	6.0

**DOUBLE RIVET
ANGLE BEAM**



14 gauge 1" x 2-3/4"

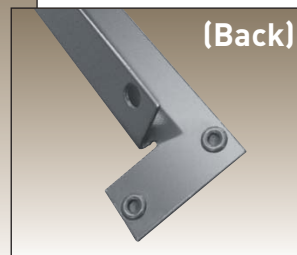
MODEL NUMBER	LENGTH INCHES	WEIGHT LBS.
RBA12	12	1.0
RBA15	15	1.2
RBA16	16	1.5
RBA18	18	1.5
RBA24	24	2.0
RBA30	30	2.5
RBA36	36	2.9
RBA42	42	3.4
RBA48	48	3.9
RBA60	60	4.9
RBA69	69	5.6
RBA72	72	5.9
RBA84	84	6.8
RBA96	96	7.8

**DOUBLE RIVET
CHANNEL BEAM**



14 gauge 1" x 2-3/4"

MODEL NUMBER	LENGTH INCHES	WEIGHT LBS.
RBC48	48	5.6
RBC60	60	7.0
RBC69	69	8.1
RBC72	72	8.4
RBC84	84	9.8
RBC96	96	11.2



(Back)

DOUBLE RIVET ANGLE BEAM - LOW PROFILE

14 gauge 1-1/8" x 2"

MODEL NUMBER	LENGTH INCHES	WEIGHT LBS.
RBALP18	18	1.2
RBALP24	24	1.3
RBALP30	30	1.6
RBALP36	36	1.9
RBALP48	48	2.9

Please Contact your Tri-Boro representative for capacities and additional information.

RIVET-RAK ACCESSORIES

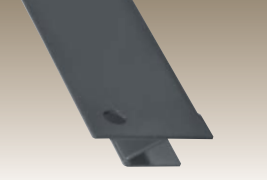
TIE BEAMS*



14 gauge 1-1/8" x 2-1/2"

MODEL NUMBER	LENGTH INCHES	WEIGHT LBS.
RTB12	12	1.4
RTB15	15	1.6
RTB16	16	1.8
RTB18	18	1.8
RTB24	24	2.3
RTB30	30	2.7
RTB36	36	3.2
RTB42	42	3.6
RTB48	48	4.1

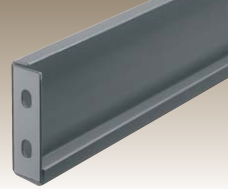
Z TIE BEAMS



14 gauge 1-1/8" x 2-1/2"

MODEL NUMBER	LENGTH INCHES	WEIGHT LBS.
ZTB18	18	1.5
ZTB24	24	1.9
ZTB30	30	2.3
ZTB32	32	2.6
ZTB36	36	2.9
ZTB42	42	3.4
ATB48	48	3.9

AISLE BRACES

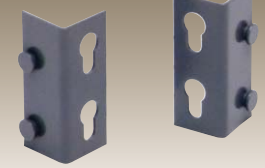


13 gauge channel formed steel

One additional return flange on top for added strength - end tabs are flanged at 90° angles with holes punched on 1-1/2" centers

MODEL NUMBER	LENGTH INCHES	WEIGHT LBS.
RRAB30	30	4.6
RRAB36	36	5.4
RRAB42	42	6.3
RRAB48	48	7.1

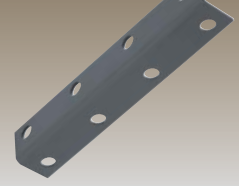
CONNECTORS



Model No: RRC-L
Rivet-Rak
Connector-Left
Weight: 0.5

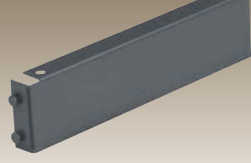
Model No: RRC-R
Rivet-Rak
Connector-Right
Weight: 0.5

RIVET SPLICE*



Model No: RSP
Weight: 0.5 lbs. 1" x 1" x 5-1/2"

WALL MOUNT*



Rivet Wall Mount 3"
Model No: RRWM-3
Weight: 0.8 lbs.

Rivet Wall Mount 9"
Model No: RRWM-9
Weight: 2.3 lbs.

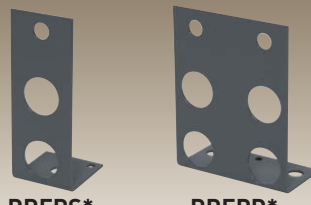
RIVET TIE PLATE*



Model No: RTP
Weight: 0.2

Lock posts together to join two or more racks side by side.

RIVET FOOT PLATES*



RRFPS*

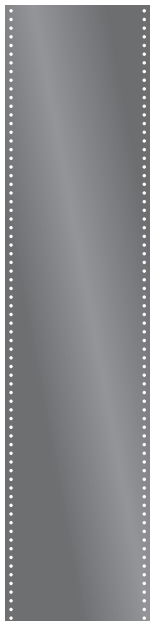
RRFPD*

Model No:
RRFPS
Weight: 0.2 lbs.

Model Number:
RRFPD
Weight: 0.4 lbs.



* These Accessories require hardware:
Model No. HB-63



SIDE AND BACK PANELS

Made of cold-rolled steel. Punched along edges with 3/8" dia. holes on 1" centers for attaching to front and rear post.

MODEL NUMBER	DESCRIPTION	DIMENSIONS	WEIGHT LBS.
RRB1572	Rivet Rak Side Panel	15"x 72" for 15"W Unit	8.0
RRB2449	Rivet Rak Side Panel	24-5/16-48-1/2 20 GA	8.9
RRB2484	Rivet Rak Side Panel	24-5/16-84 20 GA	15.0
RRB3648	Rivet Rak Back Panel	35.312 -48 20 GA	18.3
RRB3772	Rivet Rak Side Panel	32-72 20 GA	28.7
RRB2849	Rivet Rak BackPanel	28-5/16-49-1/2 20 GA	17.6
RRB4984	Rivet Rak Back Panel	48-5/16-84 20 GA	
RRB3696	Rivet Rak Back Panel	36"x 96" for 36"W Unit	36.5
RRB4850	Rivet Rak Back Panel	48"x 50" for 48"W Unit	25.4
RRB7250	Rivet Rak Back Panel	72"x 50" for 72"W Unit	38.1



SPECIALTY RIVET-RAK

Specialty Rivet-Rak Units are preconfigured, easy to assemble, strong and durable.

These units are constructed with boltless rivet-rak components. Units are designed for a wide variety of applications. Horizontal surfaces are generally created with particle board. Because they are built from Tri-Boro Rivet-Rak components these units require no sway bracing allowing easy access. All shelves are adjustable on 1-1/2" centers and are simple to assemble and flexible.

Used In Many Applications:

- Industrial • Office • Commercial Record Storage
- Warehouse • Work Stations

Select from our standard units and sizes, or have Tri-Boro custom design units to meet your specific needs. Particle board is the standard top surface for these specialty racks, however they can be outfitted with other surfaces. Contact us for further information.



TIRE RACK

Specialized sloped shelves hold tires firmly on rack. Tire rack can be bolted to wall for additional stability. Row supports available for back to back rows. See price list for wall and row supports.



Model Number Size D x W x H
TR126084 12" x 60" x 84"

TIRE RACK ACCESSORIES:



RIVET RAK MUFFLER HOLDER

Model Number: RRMUFFH
Size: 12"D X 36"W

RIVET RAK BELT HOLDER

Model Number: RRBELTH
Size: 18"D X 12"W



WORK CENTER

Model Number Size D x W x H
WC309836 30" x 98" x 36"



PACKAGING BENCH

Model Number Size D x W x H
PB367236 36" x 72" x 36"



RECORD STORAGE

Model Number Size D x W x H
RS326984 32" x 69" x 84"



RECORD STORAGE

Model Number Size D x W x H
RS164284 16" x 42" x 84"



OFFICE UNIT

Model Number Size D x W x H
OF183684 18" x 36" x 84"

RIVET-RAK PRE-CONFIGURED UNITS

SPACEMASTER RIVET-RAK

Spacemaster Rivet-Rak is best suited for light and medium applications

Double Rivet Beam on top and bottom provide stability. Single Rivet Beams provide maximum vertical space on intermediate levels.

Shelf sizes up to 36" x 48". Shelves adjust on 1-1/2" centers. Double entry access as no diagonal brace is required. Boltless, clipless construction assembles in minutes.



BULK MASTER RIVET-RAK

Bulk Master Rivet-Rak is best suited for heavy duty applications



Rivet-Rack	Description
RVR84-1236-6	RIVET-RACK 12" x 36" x 84" w/6 SHELVES
RVR84-1836-6	RIVET-RACK 18" x 36" x 84" w/6 SHELVES
RVR84-2436-6	RIVET-RACK 24" x 36" x 84" w/6 SHELVES
RVR84-3636-6	RIVET-RACK 36" x 36" x 84" w/6 SHELVES
RVR84-1248-6	RIVET-RACK 12" x 48" x 84" w/6 SHELVES
RVR84-1848-6	RIVET-RACK 18" x 48" x 84" w/6 SHELVES
RVR84-2448-6	RIVET-RACK 24" x 48" x 84" w/6 SHELVES
RVR84-3648-6	RIVET-RACK 36" x 48" x 84" w/6 SHELVES
RVR84-1236-7	RIVET-RACK 12" x 36" x 84" w/7 SHELVES
RVR84-1836-7	RIVET-RACK 18" x 36" x 84" w/7 SHELVES
RVR84-2436-7	RIVET-RACK 24" x 36" x 84" w/7 SHELVES
RVR84-3636-7	RIVET-RACK 36" x 36" x 84" w/7 SHELVES
RVR84-1248-7	RIVET-RACK 12" x 48" x 84" w/7 SHELVES
RVR84-1848-7	RIVET-RACK 18" x 48" x 84" w/7 SHELVES
RVR84-2448-7	RIVET-RACK 24" x 48" x 84" w/7 SHELVES
RVR84-3648-7	RIVET-RACK 36" x 48" x 84" w/7 SHELVES
RVR84-1236-8	RIVET-RACK 12" x 36" x 84" w/8 SHELVES
RVR84-1836-8	RIVET-RACK 18" x 36" x 84" w/8 SHELVES
RVR84-2436-8	RIVET-RACK 24" x 36" x 84" w/8 SHELVES
RVR84-3636-8	RIVET-RACK 36" x 36" x 84" w/8 SHELVES
RVR84-1248-8	RIVET-RACK 12" x 48" x 84" w/8 SHELVES
RVR84-1848-8	RIVET-RACK 18" x 48" x 84" w/8 SHELVES
RVR84-2448-8	RIVET-RACK 24" x 48" x 84" w/8 SHELVES
RVR84-3648-8	RIVET-RACK 36" x 48" x 84" w/8 SHELVES

Custom configurations available

COLORS: STANDARD COLOR IS GRAY.
*OTHER COLORS MAY INCUR AN ADDITIONAL CHARGE AND AFFECT LEAD TIMES.



	Model#	Depth	Width	Height
48" WIDTH	84-1848-4	18"	48"	84"
	84-1848-4T	WITH 1 TIE BEAM	48"	84"
	84-2448-4	24"	48"	84"
	84-2448-4T	WITH 1 TIE BEAM	48"	84"
	84-3648-4	36"	48"	84"
	84-3648-4T	WITH 1 TIE BEAM	48"	84"
	84-4848-4	48"	48"	84"
	84-4848-4T	WITH 1 TIE BEAM	48"	84"
60" WIDTH	84-1860-4	18"	60"	84"
	84-1860-4T	WITH 1 TIE BEAM	60"	84"
	84-2460-4	24"	60"	84"
	84-2460-4T	WITH 1 TIE BEAM	60"	84"
	84-3660-4	36"	60"	84"
	84-3660-4T	WITH 1 TIE BEAM	60"	84"
	84-4860-4	48"	60"	84"
	84-4860-4T	WITH 1 TIE BEAM	60"	84"
72" WIDTH	84-1872-4	18"	72"	84"
	84-1872-4T	WITH 1 TIE BEAM	72"	84"
	84-2472-4	24"	72"	84"
	84-2472-4T	WITH 1 TIE BEAM	72"	84"
	84-3672-4	36"	72"	84"
	84-3672-4T	WITH 1 TIE BEAM	72"	84"
	84-4872-4	48"	72"	84"
	84-4872-4T	WITH 1 TIE BEAM	72"	84"
96" WIDTH	84-1896-4	18"	96"	84"
	84-1896-4T	WITH 1 TIE BEAM	96"	84"
	84-2496-4	24"	96"	84"
	84-2496-4T	WITH 1 TIE BEAM	96"	84"
	84-3696-4	36"	96"	84"
	84-3696-4T	WITH 1 TIE BEAM	96"	84"
	84-4896-4	48"	96"	84"
	84-4896-4T	WITH 1 TIE BEAM	96"	84"

Custom configurations available

- Wide span capability
- Shelf sizes up to 48" x 96"
- Shelves are adjustable on 1-1/2" centers
- Standard heights to 16' available
- Other sizes & shelf capacities available
- Particle board shelves available.

SHELVING • SERVICE CARTS • PALLET RACK • WORK BENCHES • SHOP DESKS • SPECIALTY RACKS

Tri-Boro Storage Products

www.TriboroShelving.com

300 Dominion Drive | Farmville, VA 23901 | 800-633-3070 | fax 434-315-0139

19-40 Flushing Ave. | Ridgewood, NY 11385 | 718-782-8527 | fax 718-963-0457

